



*Sweetgum*  
733 ENSCONCED WAY CHASKA, MN 55318

## Plan Summary

### *Ideal* FAMILY LIVING

Welcome to this elegant, 3-bedroom family home! Featuring a luxurious vaulted owners suite, three bathrooms, and comfortable family and entertainment spaces throughout. The main living area boasts a large kitchen accompanied by vaulted ceilings in the dining area and four season porch. As well as a front study complete with built in shelving. The lower level provides ample space for hobbies and personal activities. Along with plenty of entertainment value including the wet bar, wine cellar, sauna and access to a large outdoor fire pit and kitchen. Schedule a tour of our custom-built homes today!



### *Home* DETAILS

- 4,165 sq. ft., 3 stall garage with mud room access
- 3 bedrooms, 3 bathrooms, sizable laundry room
- Open concept living room and kitchen with large walk in pantry
- Luxurious owner's suite with vaulted ceilings and a roomy walk in closet
- Spacious family room with a wet bar, wine cellar, sauna, and extra space for a game or workout room
- Screened patio, outdoor kitchen, gas firepit, additional 4 season porch on the top level



For almost 50 years Johnson-Reiland has been a family-owned custom build and design firm that is the winner of multiple Reggie awards from Housing 1st Twin Cities builders association.

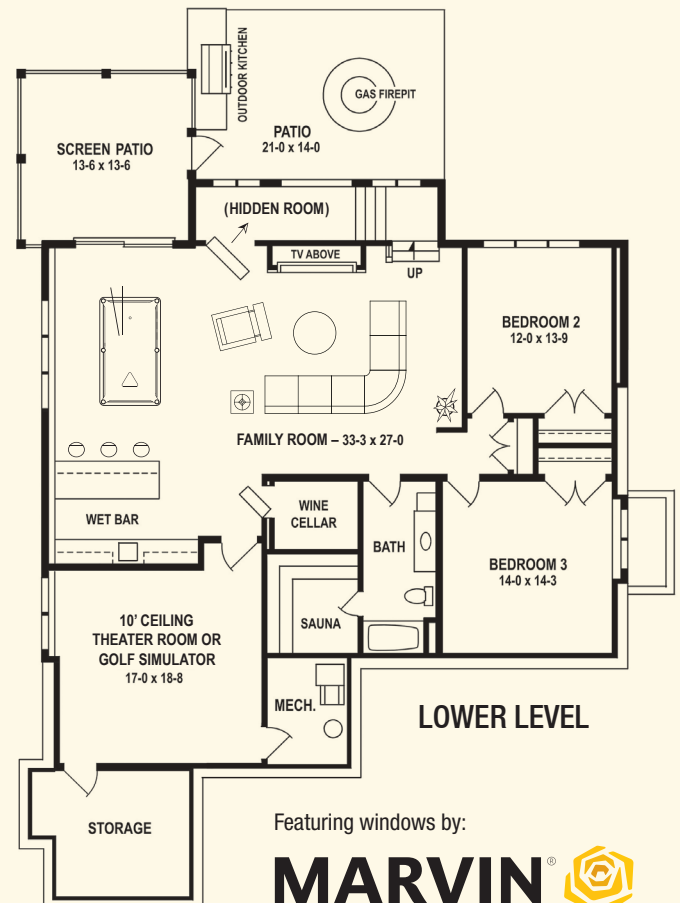
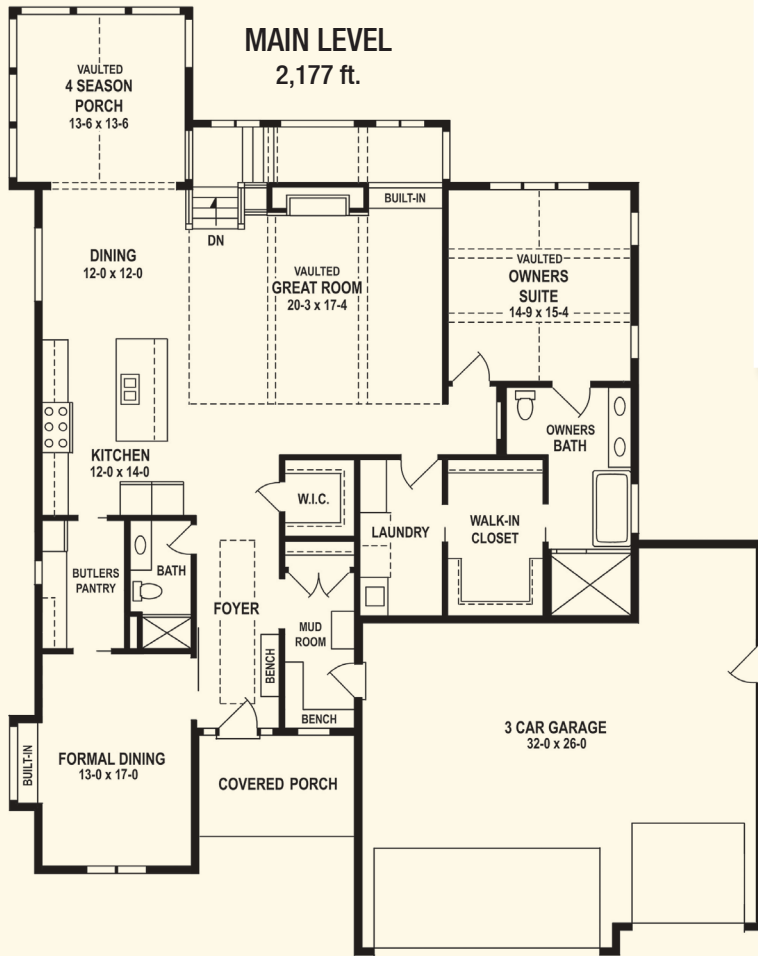


**jrbr.builders | 507.366.1288**

Builders ID BC636389



# Sweetgum Plan Layout



JOHNSON-REILAND  
BUILDERS & REMODELERS

Builders ID BC636389

507.366.1288 | jrbr.builders

Featuring windows by:

**MARVIN**

